



Infrastructure creates opportunity for everyone

Uplifting communities, improving access and sustaining our planet

Whether it's improving your commute, keeping the lights on, providing access to clean water or transforming skylines, we believe infrastructure has the power to uplift people and communities.

We are the world's trusted infrastructure consulting firm — planners, designers, engineers, program and construction managers driven by a common purpose to deliver a better world.

On projects spanning transportation, buildings, water, energy and the environment, our public- and private-sector clients trust us to solve their most complex challenges.

Through our Think and Act Globally strategy, we are focused on extending our industry-leading, global expertise to each of our projects around the world, transforming the way we deliver work through technology and digital platforms, and enhancing our position as a leading Environment, Social & Governance (ESG) company.

How we're delivering a better world

Creating sustainable legacies

We are leading the change towards a more sustainable and equitable future by partnering with our clients to provide solutions that help them achieve their environmental and social value ambitions and advancing sustainable business operations to help prevent the worst impacts of climate change.

Accelerating our industry's digital transformation

We are transforming how we work to drive faster results, smarter solutions and better outcomes. From pioneering digital design to developing innovative digital solutions that increase engagement and streamline processes, we bring the best minds together to solve our clients' biggest challenges.

Advancing equity, diversity and inclusion

When we feel free to be ourselves, we thrive. Equity, diversity and inclusion are core to our vision, and we are focused on taking action by bringing together a multitude of voices, ensuring that everyone is heard and cultivating equitable opportunities for all.

#1

Transportation, General Building and International Markets design firm, ENR ranked

\$14.4B

Full-Year 2023 Professional Services Revenue (USD)

52K

Employees worldwide



Unrivaled in expertise

Examples of signature rail projects by the Malaysia Metro Hub and iconic multidisciplinary projects in Asia and globally



East Coast Rail Link, Malaysia

The East Coast Rail Link (ECRL) is a 665-kilometer rail connection between the east and west coasts of the Malaysian Peninsula. AECOM is providing Supervision Consultancy Services for approximately half of the alignment, which includes stations, viaducts and tunnels. Upon completion by end of 2026, the ECRL will play a crucial role in linking cities and towns along the line, including Peninsular Malaysia's main shipping ports.



Johor Bahru-Singapore Rapid Transit System

This rail link between Malaysia and Singapore will ease congestion and air pollution at one of the world's busiest border crossings. AECOM began work on Phase 1 (Engineering Study) of the project in 2012 and commenced Phase 2 (Detailed Engineering Design and Construction Stage Support) in 2016. A further project optimization was carried out in early 2020 under Phase 3 with the subsequent detailed design works being carried out through Phase 4.



Keppel Marina East Desalination Plant, Singapore

The world's first large scale dual-mode desalination plant is capable of treating both freshwater and seawater, producing up to 36 million gallons of fresh drinking water a day. As the project engineer, AECOM helped deliver this crucial infrastructure that helps strengthen Singapore's water supply resilience.



Klang Valley MRT Kajang Line

AECOM provided engineering design and detailed design for the Kajang Line's Northern Elevated Section, traversing 22.5 kilometers of elevated guideway works and 12 elevated stations, as well as 5.5 kilometers of underground works, including four underground stations.



Klang Valley MRT Putrajaya Line

AECOM was the lead consultant for the 13.5-kilometer underground section. We also served as the civil and structural engineering detailed design consultant for six of the underground stations, as well as the mechanical, electrical and plumbing (MEP) detailed design consultant for the entire underground works package.



NEOM, Saudi Arabia

AECOM is leading the design transport and utilities backbone infrastructure for NEOM, a new model for urbanization and sustainability located in the northwest region of Saudi Arabia. In addition to design services, AECOM's scope also includes environmental and geotechnical support.



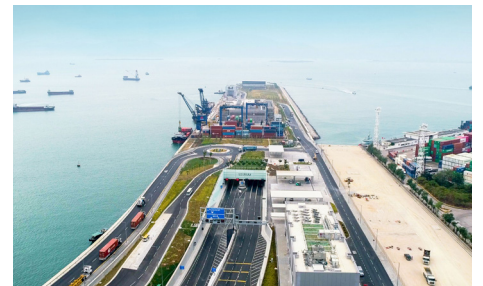
One Vanderbilt Avenue, New York, New York

AECOM Tishman served as construction manager for One Vanderbilt, a new 1,400-foot commercial tower adjacent to Midtown Manhattan's Grand Central Terminal, one of the busiest train stations in the world. The super tall building will be the second tallest office tower in New York City and will have a public transit hall at the base of the building and a 14,000 square feet public plaza.



Purple Line South, Bangkok, Thailand

The southern extension of the Purple Line metro in Bangkok has a total planned length of 23.6 kilometers, with 17 stations along the route, including 10 underground stations and seven elevated stations. The project is divided into seven contracts, with AECOM supporting Contract 1 and Contract 2, which are for the design of six (6) underground stations, ancillary structures and tunnels.



Tuen Mun - Chek Lap Kok Link, Hong Kong

AECOM provided engineering design services for this project since 2011. Its subsea tunnel holds the record in Hong Kong for being the largest and longest using the tunnel boring machine (TBM) construction method, for which the world's biggest TBM (17.6m in diameter) was deployed. The link connects Tuen Mun, the western part of Hong Kong's New Territories, to the Hong Kong-Zhuhai-Macao Bridge and Hong Kong International Airport via Hong Kong Port.